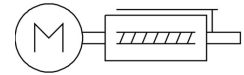
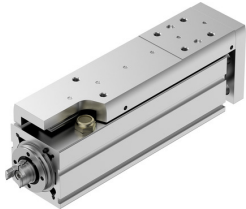


# Mini slide EGSC-BS-KF-45-150-10P

Part number: 8048304

FESTO



## Data sheet

Feature	Value
Working stroke	150 mm
Size	45
Stroke reserve	0 mm
Reversing backlash	150 µm
Screw diameter	10 mm
Spindle pitch	10 mm/U
Type code	EGSC
Mounting position	Any
Guide	Recirculating ball bearing guide
Structural design	Electrical mini-slide with ball screw drive
Motor type	Stepper motor Servo motor
Homing	Fixed stop block positive Fixed stop block, negative Reference switch
Spindle type	Ball screw drive
Symbol	00992069
Position sensing	For proximity sensor
Max. acceleration	15 m/s <sup>2</sup>
Max. speed	0.6 m/s
Repetition accuracy	±0.015 mm
Duty cycle	100%
Corrosion resistance class (CRC)	0 - No corrosion stress
LABS conformity	VDMA24364 zone III
Noise level	50 dB(A)
Degree of protection	IP40
Ambient temperature	0 °C ... 50 °C
Fixed bearing dynamic basic load rating	7413 N
Linear guide dynamic basic load rating	3240 N
Dynamic basic load rating, ball screw drive	3200 N
Max. force F <sub>y</sub>	1314 N
Max. force F <sub>z</sub>	1314 N
Max. torque M <sub>x</sub>	8.14 Nm
Max. torque M <sub>y</sub>	7.05 Nm
Max. torque M <sub>z</sub>	7.05 Nm
Max. radial force on actuator shaft	340 N

Feature	Value
Max. feed force Fx	120 N
Guide value for payload, horizontal	12 kg
Guide value for payload, vertical	12 kg
Ball screw drive statistical basic load rating	5900 N
Linear guide statistical basic load rating	5630 N
Mass moment of inertia JH per meter of stroke	0.13609 kgcm <sup>2</sup>
Mass moment of inertia JL per kg of payload	0.02533 kgcm <sup>2</sup>
Mass moment of inertia JO	0.01363 kgcm <sup>2</sup>
Feed constant	10 mm/U
Statistical fixed bearing load rating	3966 N
Reference value, running performance	5000 km
Maintenance interval	Life-time lubrication
Moving mass at 0 mm stroke	212 g
Additional weight per 10 mm stroke	63 g
Basic weight with 0 mm stroke	608 g
Product weight	1551 g
Additional moving mass per 10 mm stroke	30 g
Type of mounting	With internal thread With centering sleeve With accessories With cylindrical pin
Interface code, actuator	V32
Note on materials	Contains paint-wetting impairment substances RoHS-compliant
Slide carriage material	Roller bearing steel
Guide rail material	Roller bearing steel
Housing material	Wrought aluminum alloy, anodized
Material of yoke plate	Wrought aluminum alloy, anodized
Piston rod material	High-alloy stainless steel
Slide material	Wrought aluminum alloy, anodized
Spindle nut material	Roller bearing steel
Spindle material	Roller bearing steel